

Emergency Preparedness



THE
BRITISH SCHOOL
IN TOKYO

Agenda

- * Procedures
- * Emergency Drills
- * Resources (school and home)
- * Communication
- * Ready at home?
- * Supporting children
- * Crisis advice



BST Procedures

- * Fire:

Evacuate building immediately

Wait at evacuation point

- * Earthquake:

Duck and cover

Wait for instructions

Evacuate if necessary

Wait at school/evacuation point

School keeps children until parents arrive



Emergency Drills

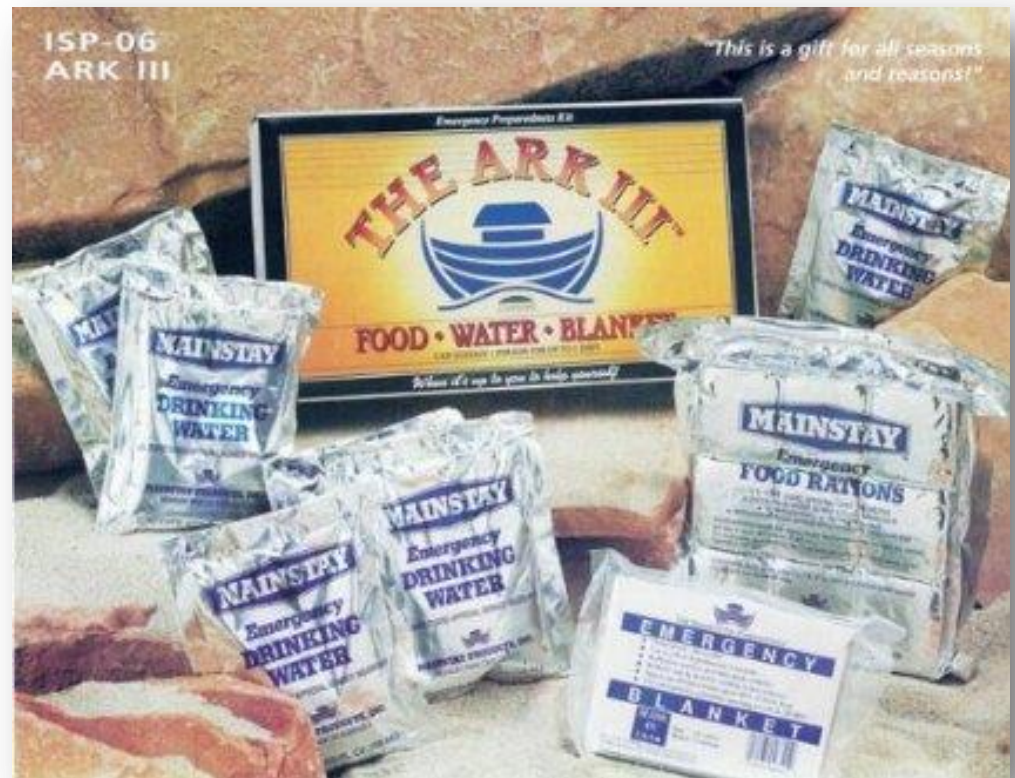
- * Fire and earthquake
- * Alarms
- * Evacuation
- * Evacuation point





Resources - school

- * Classroom
- * Ark kits
- * Site based
- * Search and rescue



Communication

* comms@bst.ac.jp

* Facebook:

<https://www.facebook.com/bst.tokyo>

* Twitter: @BST_Tokyo



Ready at home?

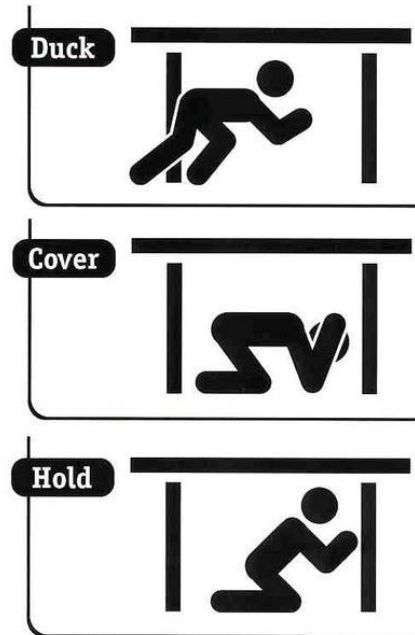
- * Secure furniture
- * Family plan
- * Emergency resources
- * Legal documents



**IS YOUR FAMILY
PREPARED?**

Action at home?

- * Open a door
- * Duck and cover
- * Evacuate your building if necessary
- * When safe, make your way to school



Resources - home

- * Water
- * Food (long life)
- * Can opener and knife
- * First Aid supplies
- * Shoes/clothing/coats/waterproofs
- * Blankets/sleeping bags
- * Cash
- * Battery powered radio
- * Torch
- * Extra batteries
- * Prescription medication
- * Toilet paper and sanitary items
- * Photocopies of passports
- * Entertainment/books



<http://www.disastercenter.com/guide/kit.htm> |

Supporting children

- * Control exposure to media
- * Put event in perspective
- * Safe environment
- * Reassurance and emotional support
- * Listen and talk
- * Maintain familiar routines
- * Be honest but age appropriate
- * TELL - <http://www.telljp.com/>



Crisis advice

- * Follow embassies on social media

- * British Nationals:

<https://www.gov.uk/government/news/foreign-office-crisis-response-it-system>

- * Radio:

- * InterFM – 89.7fm

- * Eagle810 - 810mw



Questions

